



The SeeBAEnergyFarming Group and Corporate Responsibility

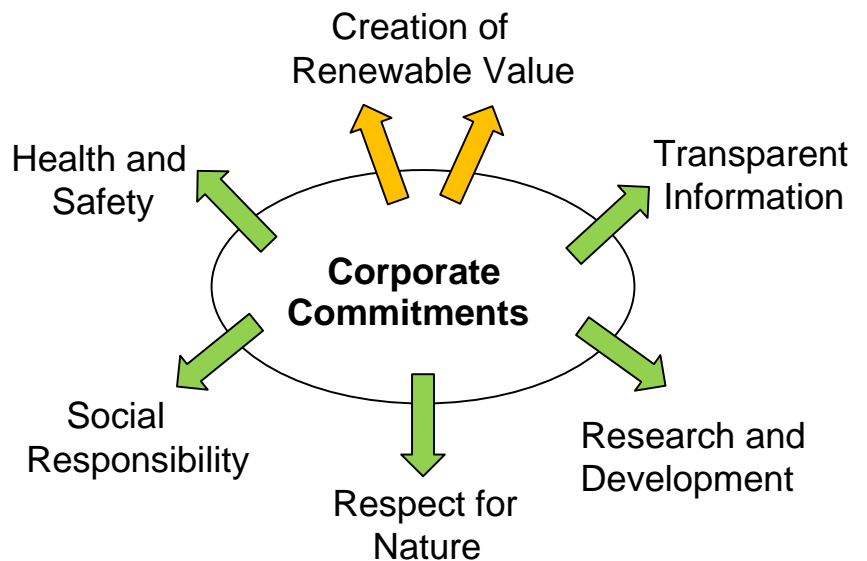
In 2008 the commitment to Corporate Responsibility was approved by the SeeBAEnergyFarming Group's Board of Directors.

Focussing on PPR – People, Planet, Renewable Profit – SeeBAEnergyFarming is dedicated to professionalism and sustainability.

This approach is being fully undertaken in each of the different activities of SeeBAEnergyFarming and is fully integrated into SeeBAEnergyFarming's processes, activities and plans. The supervision of its fulfilment is the responsibility of SeeBAEnergyFarming's Board of Director's.



In order to generate value for its stakeholders, fight climate change, preserve the natural world and be an active part of a sustainable worldwide approach for clean and renewable energy, SeeBAEnergyFarming Group is expanding with offices in eastern Europe and overseas in North America.



New Jobs in Wind Energy

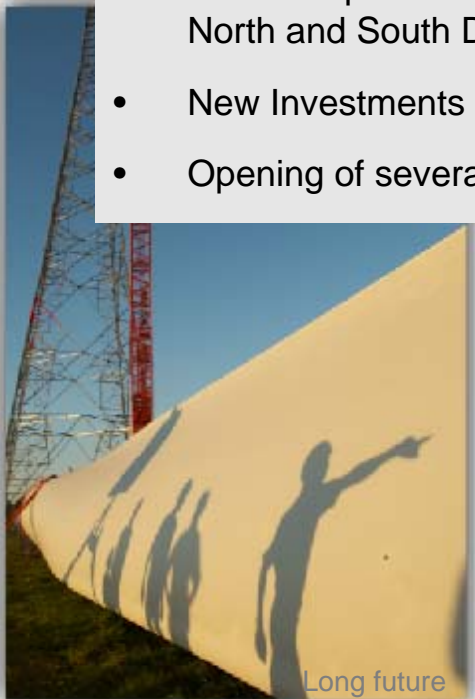
In Germany, wind energy has created 100,000 Jobs and is a vital part of Germany's industry, supplying each year about 4GW to the world, compared to the world's annually installed wind capacity of about 20GW. SeeBAEnergyFarming is part of Germany's success story.

Doing so, SeeBAEnergyFarming Group is dedicated to work in accordance with the five commitments to sustainability it has assumed to define its relationship with the environment, society and the agents and stakeholders with which it relates.



Main Milestones in 2008

- In 2008, SeeBA and Energy Farming International merged into the SeeBAEnergyFarming Group after a successful partnership.
- Approval by SeeBAEnergyFarming's Board of Directors of the 'Commitment to Corporate Responsibility'
- 80% reduction of paper through ongoing 'paperless office'-approach
- Creation of 15% new jobs in wind park development
- Commitment to our 'Non-discrimination' approach, Workforce of 11 different nationalities
- Restructuring of Quality Management to take the best of both companies.
- Construction of 50 MW of clean and renewable wind farm capacity in Germany
- Start of operation of our largest developed wind farm project, Tatanka in North and South Dakota, US, with a capacity of 180MW (sold)
- New Investments into R&D
- Opening of several East European and a Canadian office



Tatanka Dakota prairies



Tatanka 230 kV substation

Challenges/Outlook 2009



Man in the nacelle, wind park Schonach

- Construction of 80 MW of new clean and renewable wind park capacity in Europe
- Construction of our 1st 10 MW wind farm project in Canada
- 10% growth in turnover despite the financial crisis – we expect the general market downturn to be mitigated by the trend towards hard (operating) assets like wind turbines.
- Creation of 10% new jobs worldwide
- Creating opportunities to invest in sustainable wind farm assets for private people/communities rather than investing in speculative financial market instruments
- Continued promotion of equal opportunity practices in all of SeeBAEnergyFarming's Group activities



Man on nacelle

Commitment to the Creation of Renewable Value

As part of its commitment to sustainable growth and renewable economic activity, the SeeBAEnergyFarming Group aims to assure that its investments are profitable while guaranteeing high quality operations and financial soundness and efficiency. Aside from minimizing the utilization of raw materials, SeeBAEnergyFarming Group is especially focused on the broad use of renewable energies, with the most economic and therefore most important being wind energy.

Value is generated for :

- **Investors** to which projects and services are provided to.
- **Shareholders** through the financial profitability and sustainability of the investments made
- To **society** by fostering sustainable economic growth in the countries in which the Group operates, making societies less dependent on fossil energy generation while generating new opportunities
- **Future generations** by creating a sustainable, renewable, clean and economic way of producing energy while fighting climate change, giving our children **unlimited perspectives** for development on our planet.

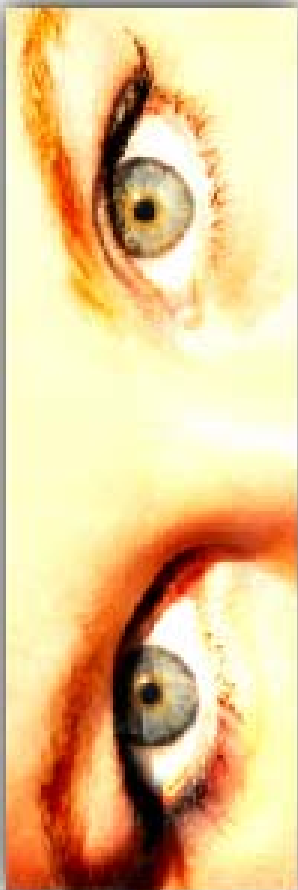




Transparent towers

Commitment to Information Transparency

One of the key elements of SeeBAEnergyFarming Group's strategy to fulfil its mission to generate renewable value for investors, shareholders, societies and future generations is information transparency. The objective of this strategy is to assure that its activity is as open as possible, and that the interests of its investors, partners and stakeholders are respected. We at SeeBAEnergyFarming Group believe that information transparency and project progress is an important point for our partners and for services we provide. Transparency shows success.



The general objective of transparency is achieved by following these guidelines :

- Transmitting the Companies' overall corporate strategies externally as well as those specific to each of the Companies' business areas.
- Projecting the Group's business reality and assuring that the Group is recognised as being sound and well managed inside and outside of Germany.
- Maintaining a fluent relationship with external agents, business partners, societies.
- Information of media representatives

Transparency shows success!



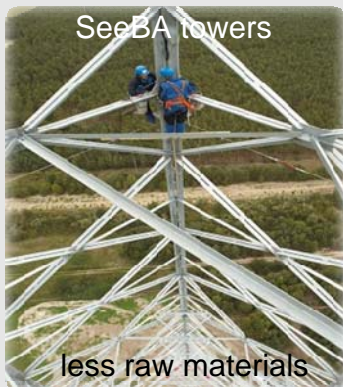
World record 160m SeeBA tower in Germany

Commitment to Research and Development

We at SeeBAEnergyFarming believe that the key to successful and sustainable renewable energy generation is Research and Development. 10 years of successful lattice-type tower development through innovation made us the worldwide market leader for lattice-type turbine towers, reaching hub-heights of up to 160 meters while saving raw-material, obtaining higher strength and reduced costs for turbine towers, enabling us to harvest the stronger winds in heights that were not economically feasible before.

SeeBAEnergyFarming Group's R&D activities have significantly increased over the past 5 years, enabling us to hold the world record of 160m hub-height for wind turbine towers.

Furthermore, our towers need less raw materials compared to tubular turbine towers, making them even more environmental friendly, economic and hence generating more value.



We are also conducting research and development in offshore wind farming through our affiliate ep4-offshore, enabling us to maintain offshore wind farms in bad weather conditions: Our Personnel Transfer System PTS for off-shore wind farms.



All our R&D efforts are dedicated to our commitment of Corporate Responsibility and help to achieve our goals of sustainable, renewable and valuable energy generation.



Commitment to Respect for Nature

SeeBAEnergyFarming Group's activities have an important positive impact on Nature. Each kilowatt hour electric power generated by renewable wind energy avoids toxic mercury, carbon dioxide and acid rain producing emissions. Wind energy is a huge source of cheap **zero emission energy**. We furthermore avoid large scale habitat destruction and produce no radioactive risks or waste for current or future generations. Wind energy is **clean and renewable energy**.

The development of wind farms and the generation of clean, renewable energy certainly leads to changes in the environment mostly visually changing the landscape. We at SeeBAEnergyFarming Group take great care to study the effects on the landscape in an effort to minimize them.

We at SeeBAEnergyFarming evaluate the impact of our activities on the environment constantly and try to minimise them through our Research activities. We also believe that overall wind power is a soft way to produce clean and renewable energy.



Transparent SeeBA towers

Following our commitment of Corporate Responsibility and information transparency, we work closely together with landowners, municipalities, ministries and other stakeholders to optimize the generation of value.



Commitment to the Social Environment

Being a vital part of society, SeeBAEnergyFarming Group is aware of its responsibility for the social environment.

Today, SeeBAEnergyFarming Group employs people from more than 11 different nationalities, being committed to its multi-cultural, non-discriminational work environment.



SeeBAEnergyFarming Group is also committed to:

- Providing staff with a context and prospects in which professionals can develop their talent and reap the rewards of their work as something valuable and desirable.
- A rigorous hiring process that enables the Group to rely on the best professionals
- Promotion of gender diversity and equal opportunities
- Success based opportunities to development